



Bryan Bishop
and partners

The Walled Garden
Welwyn, AL6 0BZ

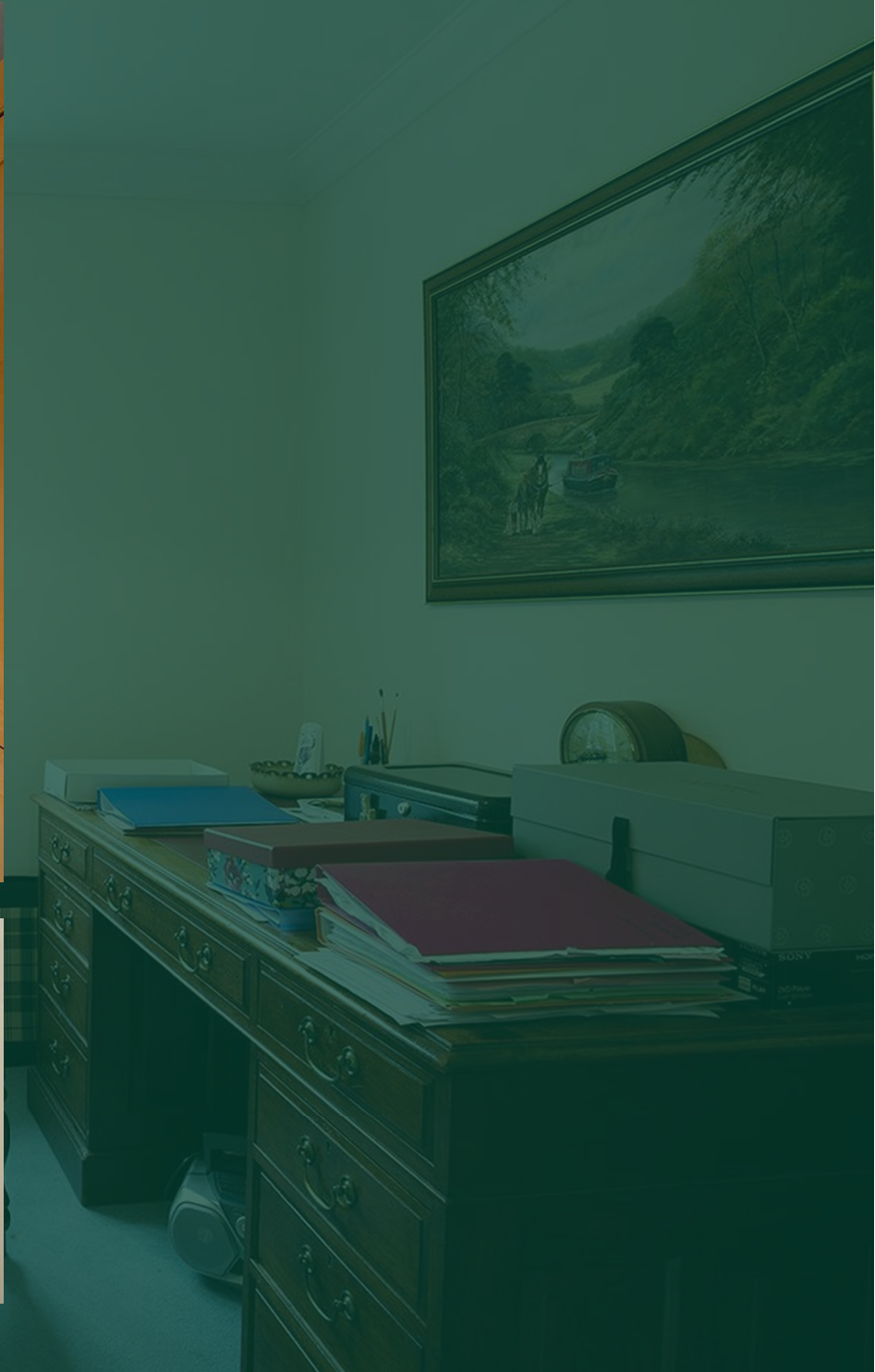
Guide price £695,000



The Walled Garden

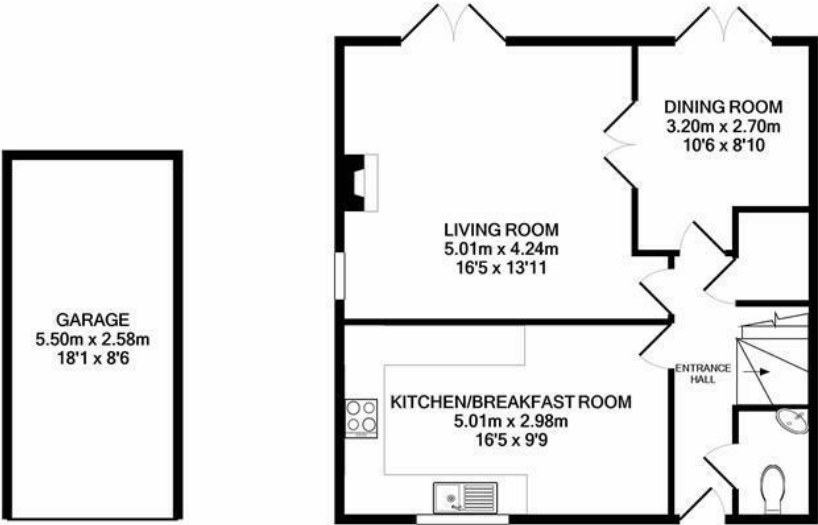
Welwyn, AL6 0BZ



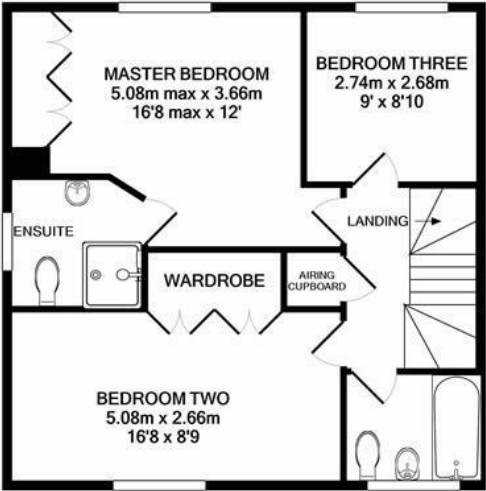








GROUND FLOOR
APPROX. FLOOR
AREA 65.9 SQ.M.
(709 SQ.FT.)



1ST FLOOR
APPROX. FLOOR
AREA 51.4 SQ.M.
(554 SQ.FT.)

TOTAL APPROX. FLOOR AREA 117.3 SQ.M. (1263 SQ.FT.)

Whilst every attempt has been made to ensure the accuracy of the floor plan contained here, measurements of doors, windows, rooms and any other items are approximate and no responsibility is taken for any error, omission, or mis-statement. This plan is for illustrative purposes only and should be used as such by any prospective purchaser. The services, systems and appliances shown have not been tested and no guarantee as to their operability or efficiency can be given

Made with Metropix ©2022

Energy Efficiency Rating		
	Current	Potential
Very energy efficient - lower running costs		100
(92 plus) A		
(81-91) B		
(69-80) C	72	
(55-68) D		
(39-54) E		
(21-38) F		
(1-20) G		
Not energy efficient - higher running costs		
England & Wales		
EU Directive 2002/91/EC		



Bryan Bishop
and partners

6a High Street | Welwyn | AL6 9EG | 01438 718877 | info@bryanbishop.co.uk | www.bryanbishop.co.uk Find us on 